

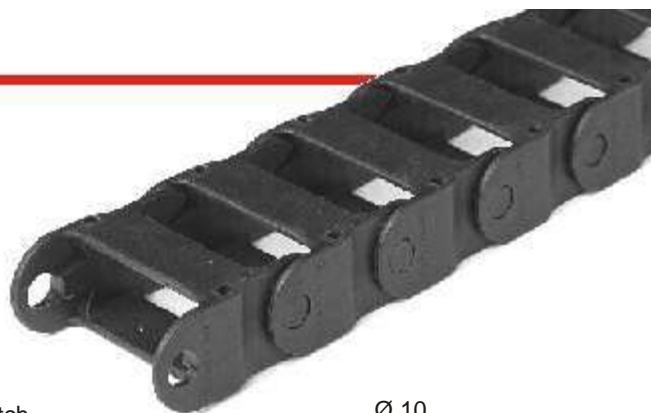


cadenas portacables

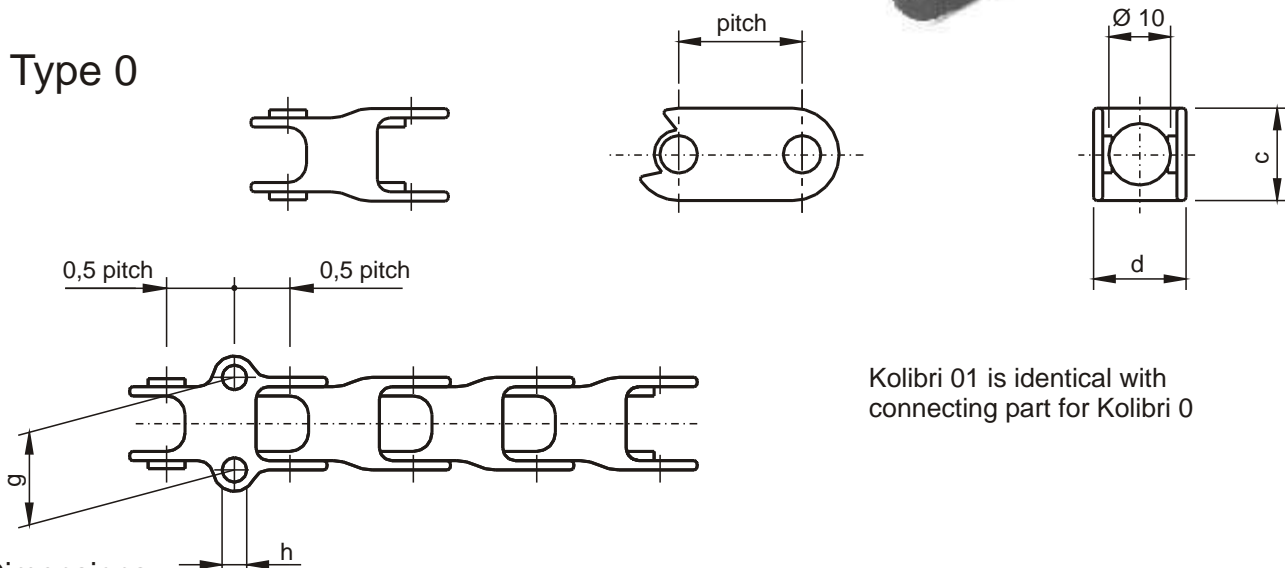
Kolibri

Kolibri: Type 0,01,1,2,3

- * smallest dimensions
- * easily extendable and shortable
- * integrated end connectors
- * highly rigid and wear resistant



Type 0

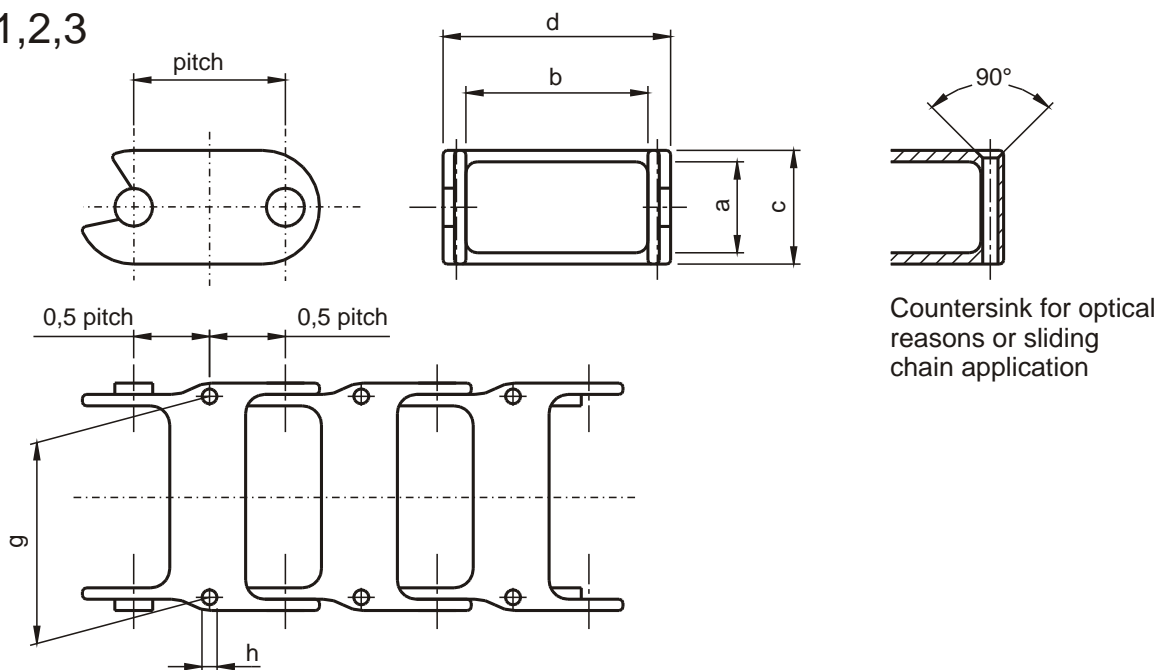


Kolibri 01 is identical with connecting part for Kolibri 0

Dimensions:

Type	Bending Radius R	pitch	Inner dim.		Outer dim.		Connecting dim.		weight kg / m
			Ø 10		c	d	g	h	
Kolibri 0	17,5 / 20 / 30	20	Ø 10		15	15	15	4	0,13

Type 01,1,2,3

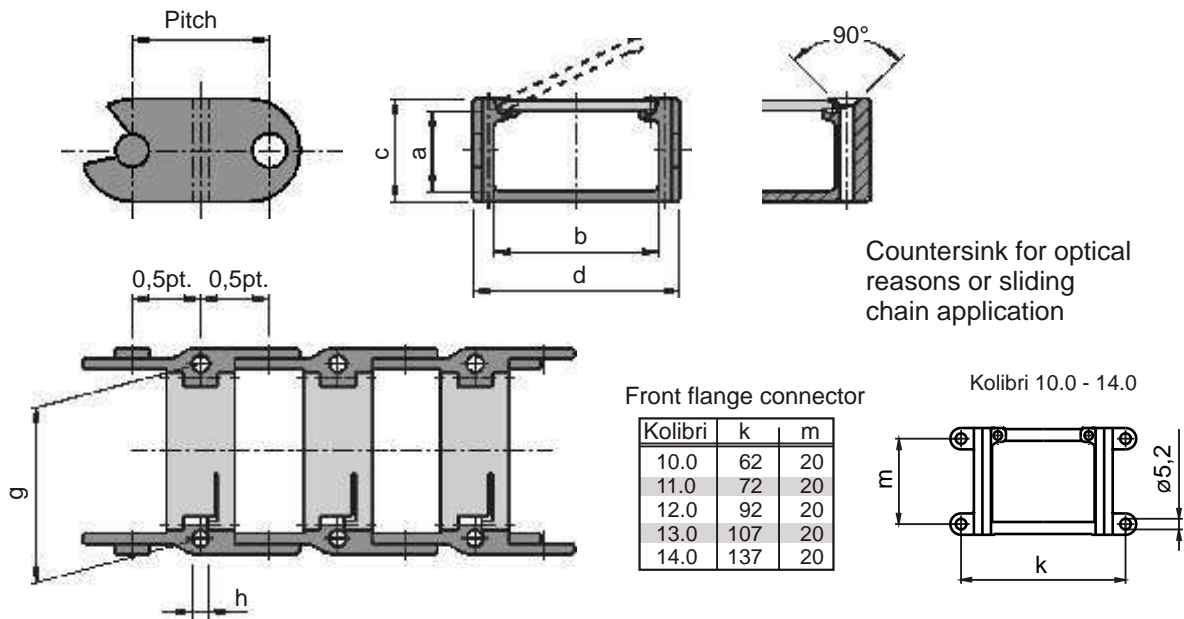


Dimensions:

Type	Bending Radius R	pitch	Inner dim.		Outer dim.		Connecting dim.		weight kg / m
			a	b	c	d	g	h	
Kolibri 01	20 / 30	20	Ø 10		15	22	15	4	0,15
Kolibri 1	40/100/200	40	24	18	30	30	23	4	0,5
Kolibri 2	40/100/150/200	40	24	48	30	60	53	4	0,6
Kolibri 3	40/100/200	40	24	78	30	90	83	4	0,7

Kolibri: Type 02-06 ,10.0-14.0

easy access by flap open bars
integrated end connectors
extremely rigid and wear resistant
variable separation with plastic divider



Dimensions:

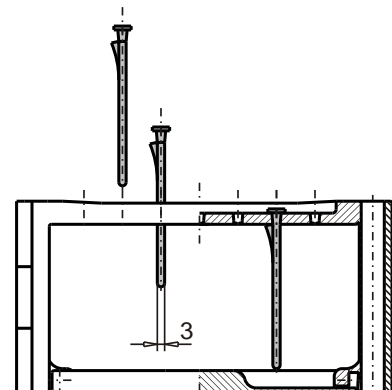
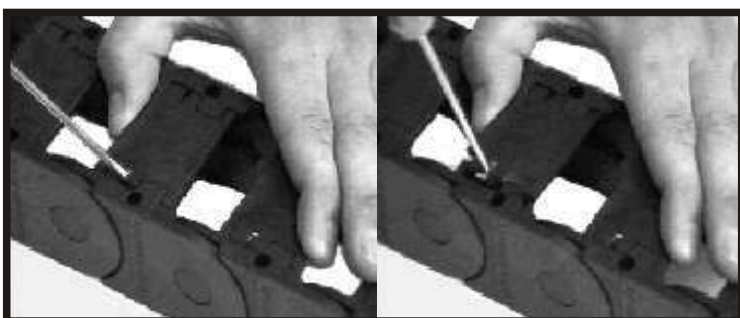
Type	Bending Radius R	pitch	Inner dim.		Outer dim.		Connecting dim.		weight kg / m
			a	b	c	d	g	h	
Kolibri 02	20 / 30	20	10	24	15	37	30	4	0,20
Kolibri 03	20 / 30	20	10	39	15	51	44	4	0,28
Kolibri 05	35 / 70	30	18	25	22	38	31	4	0,34
Kolibri 06	35 / 70	30	18	36	22	48	41	4	0,37
Kolibri 10.0	40/75/100/150/200	35	23	34	30	50	40	5	0,54
Kolibri 11.0	40/75/100/150/200	35	23	44	30	60	50	5	0,61
Kolibri 12.0	40/75/100/150/200	35	23	64	30	80	70	5	0,65
Kolibri 13.0	40/75/100/150/200	35	23	79	30	95	85	5	0,75
Kolibri 14.0	40/75/100/150/200	35	23	109	30	125	115	5	0,87



Assembling advice:

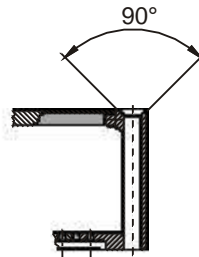
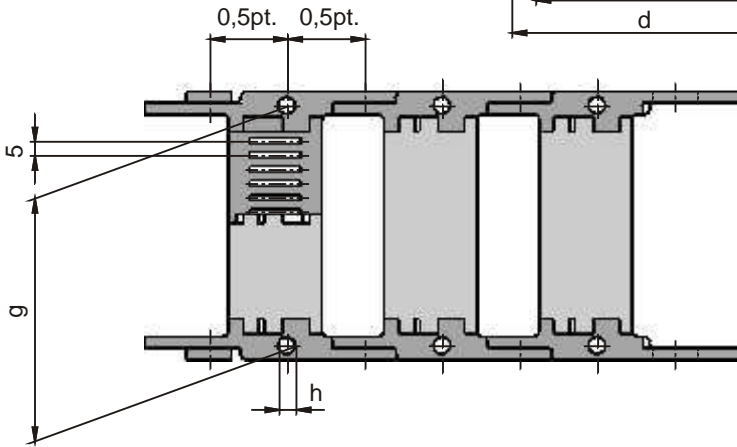
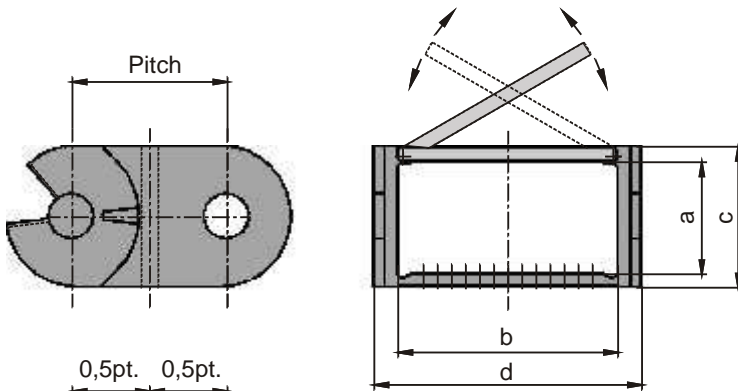
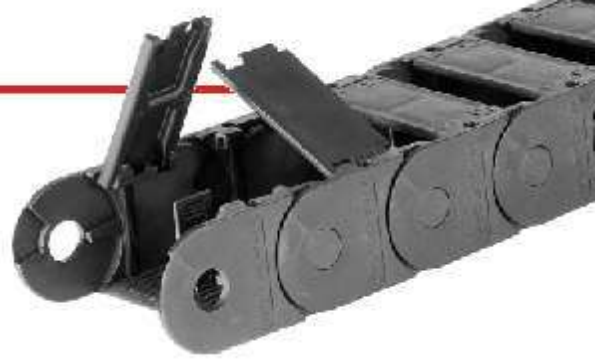
- Opening:
- unlock bar by lifting from gap
 - open by pushing bar slightly sideways
- Closing:
- simply press down bar and lock

The newly developed "Pinch Stay" plastic divider system allows quick and easy separation . Even for cable loaded chain.



Kolibri: Type 15.0 to 29.0

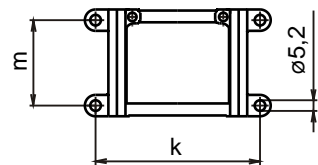
easy access by flap open bars
integrated end connectors
extremely rigid and wear resistant
unique separation with the new divider
design "Pinch Stay"



Countersink for optical reasons or by sliding chain application

Front flange connector

Kolibri	k	m
19.0	107	40
20.0	162	40
21.0	77	40
22.0	137	40
29.0	237	55



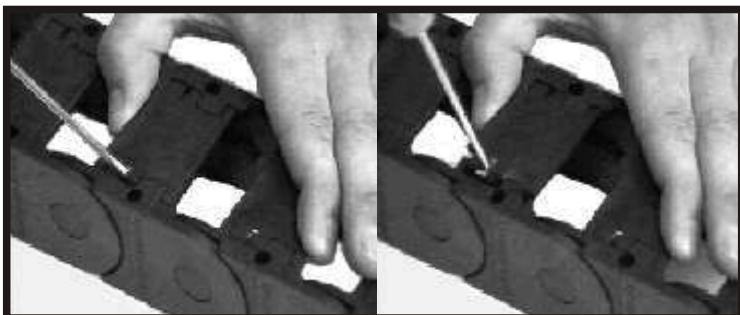
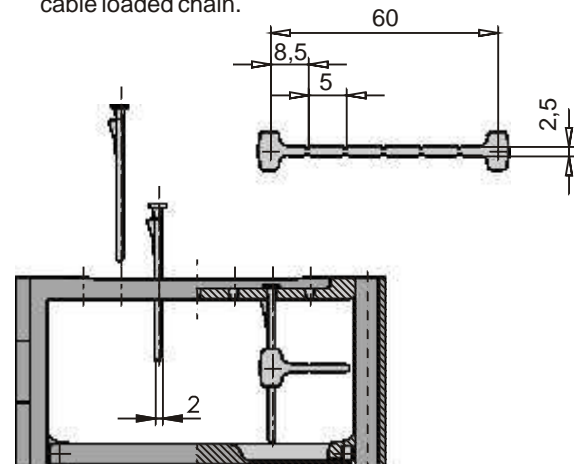
Type	Bending Radius R	Tlg	Inner Dim.		Outer Dim.		e	Connecting Dim.		Weight kg / m
			a	b	c	d		g	h	
Kolibri 15.0	60/ 75/ 100/ 150/ 200	45	29	47	40	62	4	54	5	1,05
Kolibri 16.0	60/ 75/ 100/ 150/ 200	45	29	60	40	75	4	67	5	1,05
Kolibri 17	60 / 100/ 125/ 250	50	30	109	40	125	2	115	5	1,30
Kolibri 19.0	75/ 100/ 150/ 175/ 200	55	40	78	50	95	2	85	6	1,35
Kolibri 20.0	75/ 100/ 150/ 200/ 250	55	40	133	50	150	3	140	6	1,57
Kolibri 21.0	75/ 100/ 150/ 200/ 250	55	40	48	50	65	2	55	6	1,30
Kolibri 22.0	75/ 100/ 150/ 200/ 250	55	40	108	50	125	3	115	6	1,52
Kolibri 29.0	100/125/ 150/ 200/ 300	70	50	205	65	225	4	215	6	2,71



Assembling advice:

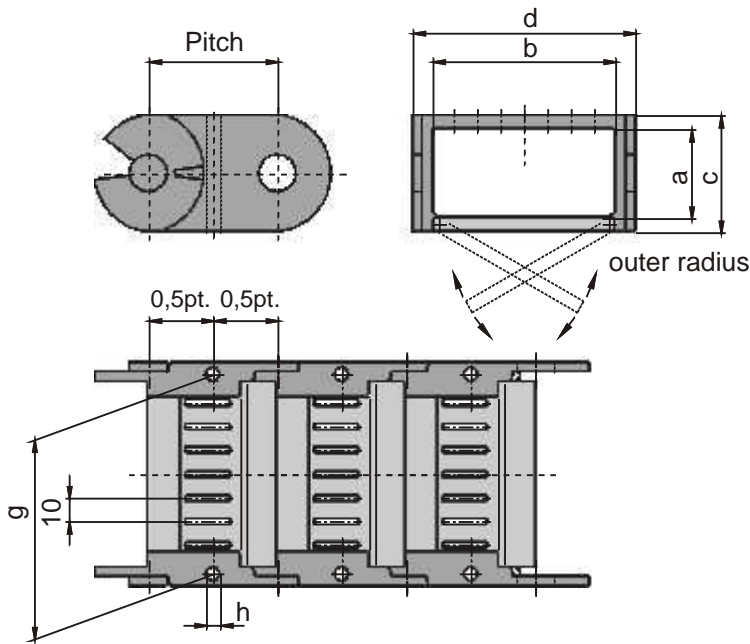
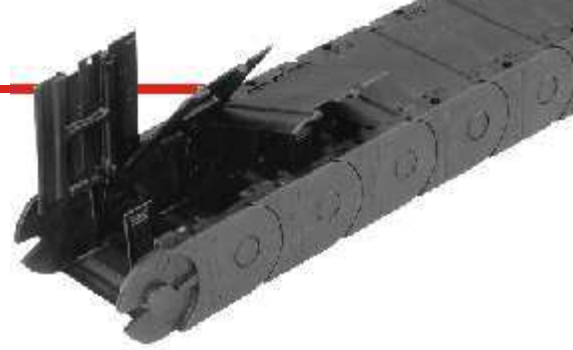
- Opening:
- unlock bar by lifting from gap
 - open by pushing bar slightly sideways
- Closing:
- simply press down bar and lock

The newly developed "Pinch Stay" plastic divider system allows quick and easy separation. Even for cable loaded chain.



Kolibri: Type 02.5 to 27.5

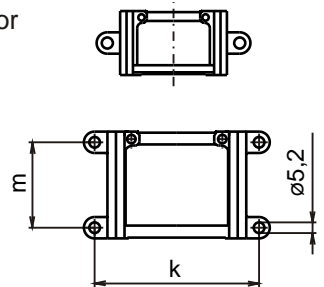
- closed type
- hinged covers
- high rigidity
- integrated end connector
- easy separation



Front flange connector

Kolibri	k	m
02.5	46	-
07.5	70	-
10.5	62	-
15.5	74	40
19.5	107	40
20.5	162	40
21.5	77	40
24.5	107	55
25.5	147	55
27.5	207	55

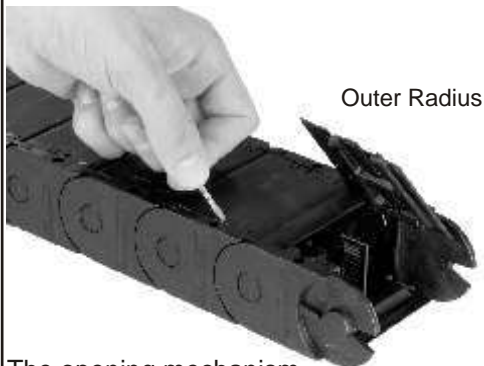
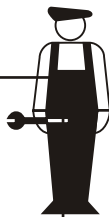
Kolibri 02.5, 07.5 u. 10.5



Type	Bendingradius R	Pt.	Inner Dim.		Outer Dim.			Connector		Weight kg / m
			a	b	c	d	e	g	h	
Kolibri 02.5	30 / 50	18	10	24	15	36		30	4	0,28
Kolibri 07.5	50 / 70 / 100	26	17	48	22	60		53	4	0,54
Kolibri 10.5	60/75/100/150/200	35	21	34	30	50	2	40	5	0,65
Kolibri 15.5	75/100/150/200	45	30	48	40	62	2	54	5	0,91
Kolibri 19.5	100/150/200/250	55	38	78	50	95	2	85	6	1,50
Kolibri 20.5	100/150/200/250	55	38	134	50	150	2	140	6	1,90
Kolibri 21.5	100/150/200/250	55	38	48	50	65	2	55	6	1,30
Kolibri 24.5	125/150/200/300	70	50	77	65	95	4	85	6	2,20
Kolibri 25.5	125/150/200/300	70	50	117	65	135	4	125	6	2,60
Kolibri 27.5	125/150/200/300	70	50	177	65	195	4	185	6	3,00

Assembly advice:

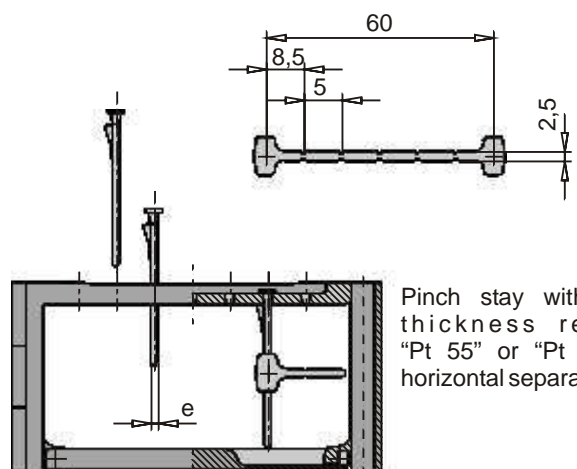
Type Kolibri is now also available as a totally closed version.



Outer Radius

The opening mechanism same as open chain.

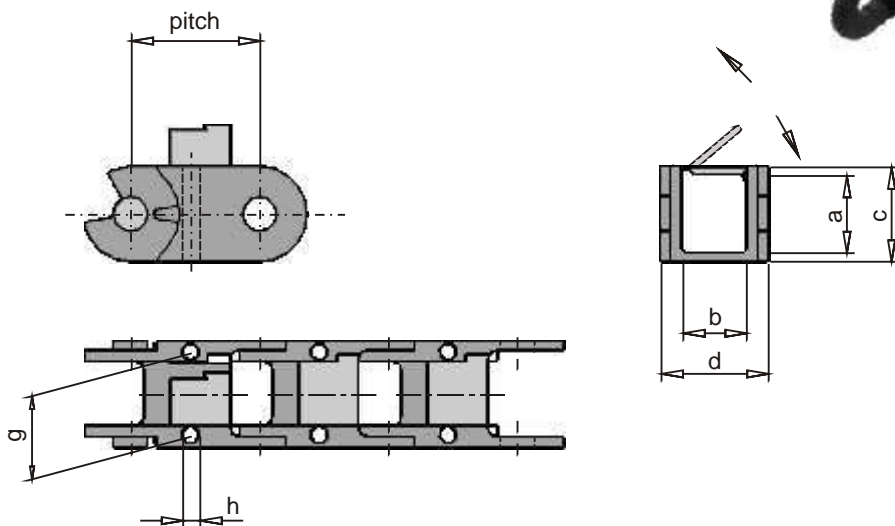
Pinch stay and horizontal stay:



Pinch stay with 4mm thickness require "Pt 55" or "Pt 75" for horizontal separation.

Kolibri with "Film-Stay"

- openable in inner radius
- rigid design for small chains

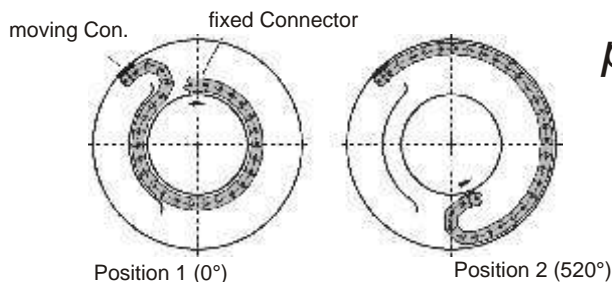


Dimensions

Type	Bendingradius R	Pt.	Inner Dim.		Outer Dim.		Connecting Dim.		Weight kg / m
			a	b	c	d	g	h	
Kolibri 00.3	15 / 30 / 50	15	Ø 7		10	12	12	3	0,06
Kolibri 0.3	20 / 30	20	Ø 10		15	15	15	4	0,10
Kolibri 04.3	35 / 70 / 100	30	17	15	22	25	19,4	4	0,20

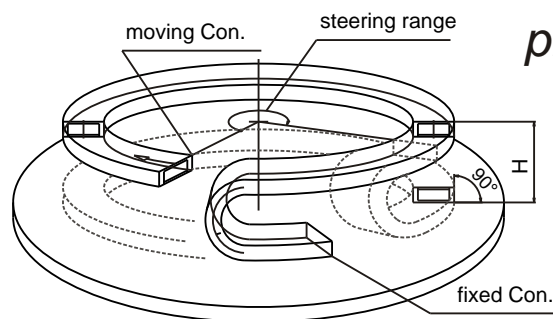
Kolibri "Circular"

Type Kolibri can also be supplied as a circular operating chain system. Pic1 shows an application, where the chain is guided in a special trough. We recommend strongly, you ask for our assistance.



pic1

Bild 2 shows an special configuration, which you need for some kind of robots. In such cases ask for our leaflet "Interflex K".



pic2